




---

---

---

---

---

---

---

---

---

---

**The Claret School of SAN DIEGO**

### School Demographics and Design

- 18 Resource Centers across San Diego
- 3 administrative offices
- Serve students in grades 7-12
- 4,000 students served annually
- Pathways Personalized Education Program
- Designated as an ASAM school by the State of California

*2016 Baldrige Regional Conference*

---

---

---

---

---

---

---

---

---

---

**Malcolm Baldrige Award Recipient 2013**

**The Claret School of SAN DIEGO**

## Our Students

- 156 Number of non-English speaking students
- 60% Average number of students behind on credits at enrollment
- 69% of CSSD students are socioeconomically disadvantaged
- 32 Number of non-English languages spoken by CSSD students
- 28% Students with diverse backgrounds and experience from high school
- 362 English Learners Served
- Students from many backgrounds enroll with us

*2016 Baldrige Regional Conference*

---

---

---

---

---

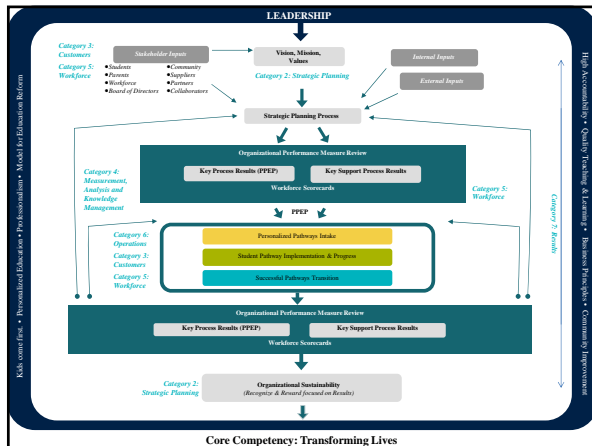
---

---

---

---

---




---

---

---

---

---

---

---

---

---

---

---

---



---

---

---

---

---

---

---

---

---

---

---

---



---

---

---

---

---

---

---

---

---

---

---

---

# Phase 1

Malcolm Baldrige National Quality Award  
2013 Award Recipient

The Cluster School of SAN DIEGO

**1 Personalized Pathways Intake**

Student Partners with: Pathways Intake Staff, Counselor, Teacher & Parent.

PPEP Creation: Collect/analyze student data and feedback.

Measure of Success: Fully designed PPEP ready for implementation.

**Key Process Requirements and Measures**

Requirements	Process Measure	Results
Personalized Pathways Intake	Reduce Student Intake Cycle Time	Figure 7.1-31
	Increase SSC Customer Service Survey Results	Figure 7.2-15
	Increase Enrollment Data	Figure 7.5-6

**Figure 7.5-6 CSD Market Performance (Enrollment)**

Year	CSD	Competitor A	Competitor B	Competitor C
09	1704	113	609	300
10	2014	458	782	297
11	2186	561	799	308
12	2101	594	428	258
13	2072	776	565	304
14	2187	874	762	305
15	2200			
16	2300			

2016 Baldrige Regional Conference

---

---

---

---

---

---

---

---

---

---

---

---

# Phase 2

Malcolm Baldrige National Quality Award  
2013 Award Recipient

The Cluster School of SAN DIEGO

**2 Student Pathway Implementation & Progress**

Adjustments to PPEP informed by student achievement data.

Student Partners with: Teacher, Counselor, Parent & Learning Lead.

Ed Programs & Services: A dynamic program driven by engaging staff & rigorous curriculum supported by technology and high-quality activities and materials.

PPEP Storybook Results: Monitoring and adjustment of plan given student assessment and feedback to focus engagement.

**Key Process Requirements and Measures**

Requirements	Process Measure	Results
Personalized Instruction	Increase MAP Growth	Figures 7.1-19-21
	Maintain Student Retention Rates	Figure 7.1-30
	Increase Student Participation Rates	Figure 7.1-10
	Increase Student Confidence Survey	Figures 7.1-23-29

**Figure 7.1-10 Cumulative Participation on Enrollment by Grade Level (Student Attendance)**

Grade Level	Participation (%)
All	72%
7th	83%
8th	77%
9th	66%
10th	79%
11th	73%
12th	67%

2016 Baldrige Regional Conference

---

---

---

---

---

---

---

---

---

---

---

---

# Phase 3

Malcolm Baldrige National Quality Award  
2013 Award Recipient

The Cluster School of SAN DIEGO

**3 Successful Pathways Transition**

Student Partners with: Pathways Intake Staff & Counselor.

PPEP Verification: Student profile & transcript review verified and finalized.

Measure of Success: Completion or Redirection.

**Key Process Requirements and Measures**

Requirements	Process Measure	Results
Redirect or Complete Pathways Intake	Increase Graduation Rate	Figures 7.1-5-9
	Decrease Drop Out Rate	Figures 7.1-1-4
	Increase Successful Transition Rate	Figure 7.1-22

**Figure 7.1-1 Dropout Rate**

Year	Competitor A	Competitor B	Competitor C	County	State	Nation	CSD
09	32.0%	36.2%	31.7%	3.8%	4.0%	2.8%	4.8%
10	83.0%	42.8%	26.0%	3.4%	4.2%	3.3%	4.0%
11	49.9%	33.2%	33.8%	3.5%	4.0%	3.3%	4.6%
12	40.2%	22.1%	30.4%	3.5%	3.9%	3.3%	3.3%
13	26.7%	21.0%	31.0%	2.7%	3.1%	4.4%	2.4%
14							

2016 Baldrige Regional Conference

---

---

---

---

---

---

---

---

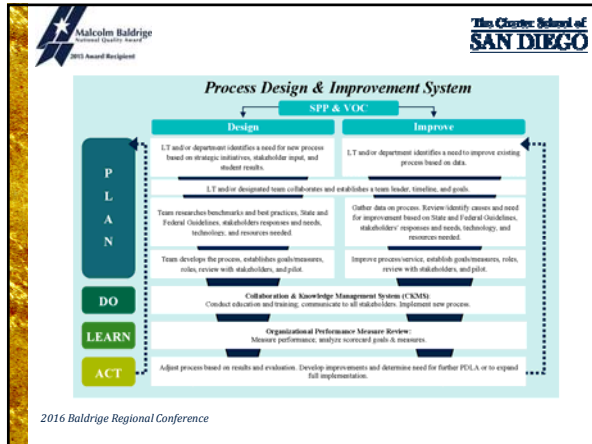
---

---

---

---






---

---

---

---

---

---

---

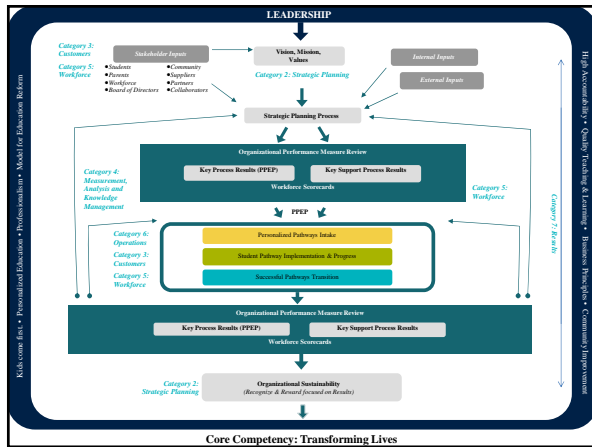
---

---

---

---

---




---

---

---

---

---

---

---

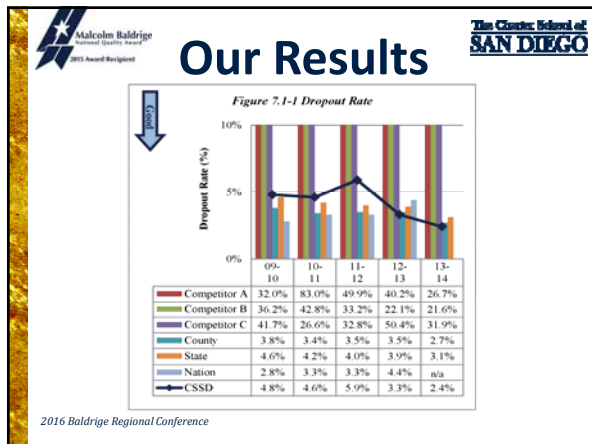
---

---

---

---

---




---

---

---

---

---

---

---

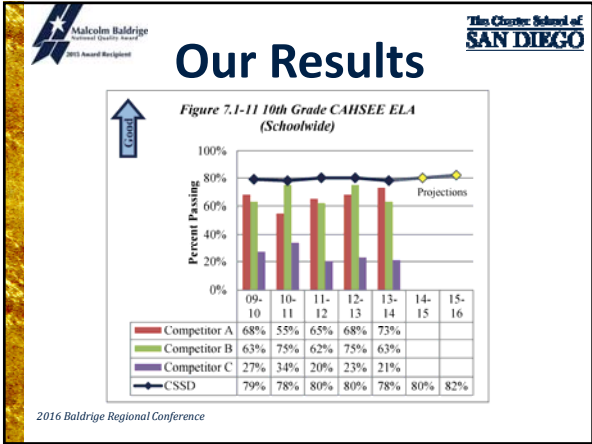
---

---

---

---

---




---

---

---

---

---

---

---

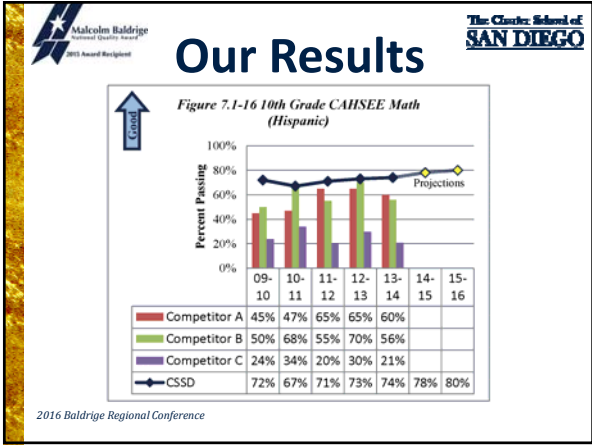
---

---

---

---

---




---

---

---

---

---

---

---

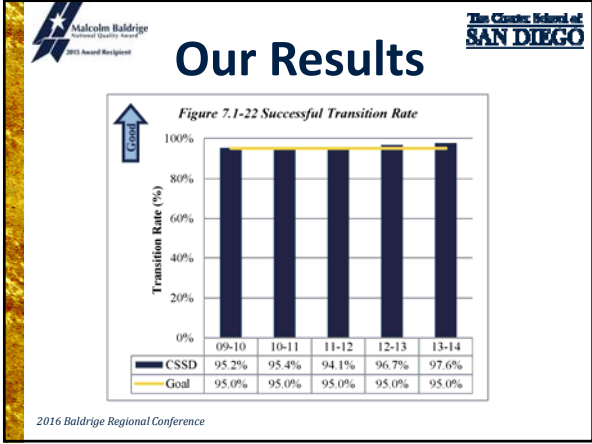
---

---

---

---

---




---

---

---

---

---

---

---

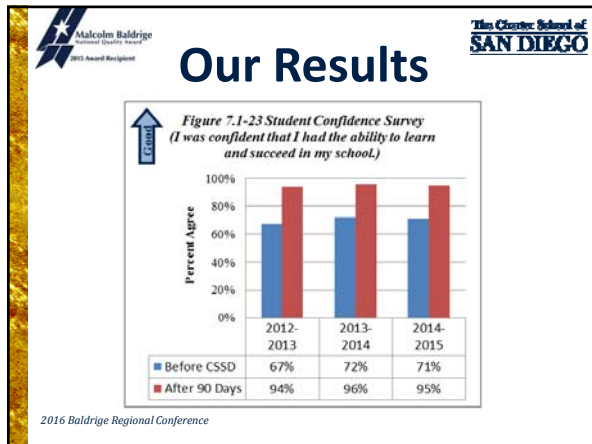
---

---

---

---

---




---

---

---

---

---

---

---

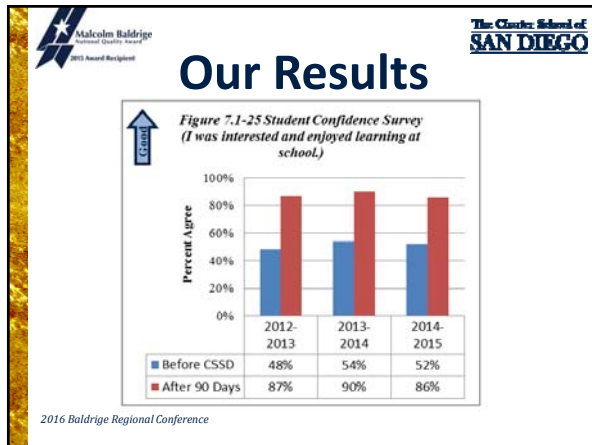
---

---

---

---

---




---

---

---

---

---

---

---

---

---

---

---

---




---

---

---

---

---

---

---

---

---

---

---

---